

General Specifications:

Total Fixture Output: 11.6 klm

Light Engine Output: 39.4 klm

Efficacy: 20 Lumen/Watt

Lens Option: N/A

Zoomrange: 12-48°

CRI: 80+

CQS: 80+

TM-30 Rf: 80+

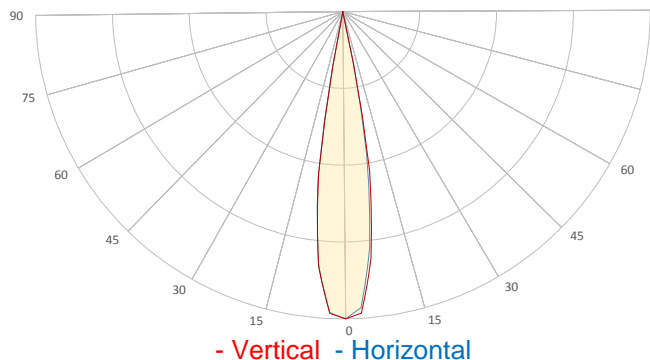
TM-30 Rg: 95+

TLCI: 70+

Color Temperature: 6000 K



Measurement



Catalog Number: 90234000

Measured Output: 11687 lm

Measured Peak: 149695 cd

Consumed Power: 590 W

Efficacy: 19.8 Lumen/Watt

Beam Angle (50%): 18.2°

Field Angle (10%): 22.9°

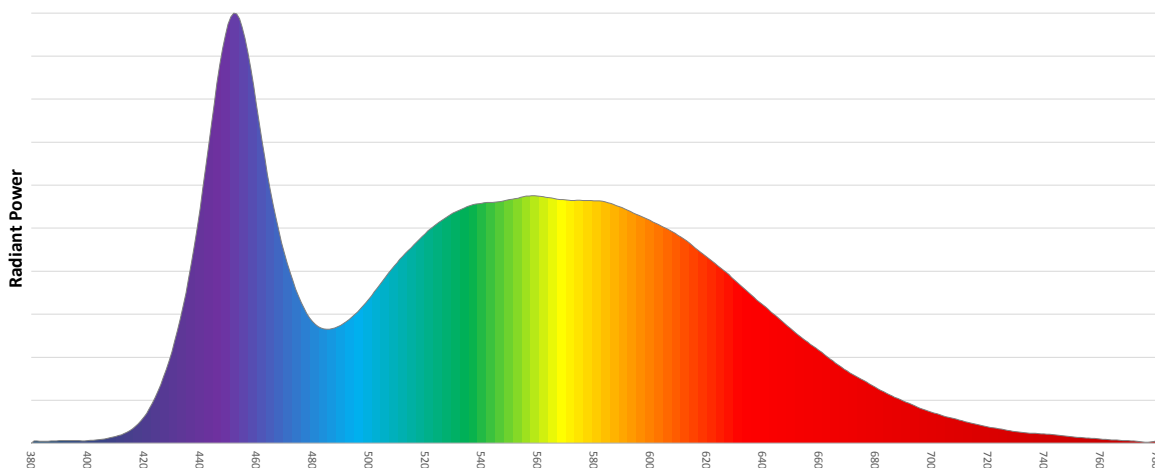
Cutoff Angle (3%): 23.7°

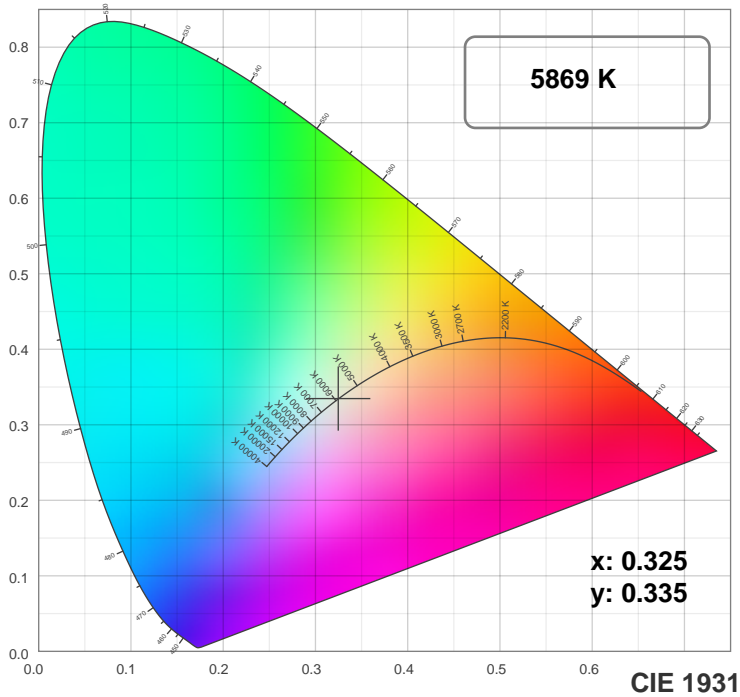
Measurement Condition:

Ambient Temperature: 25 +/- 5C

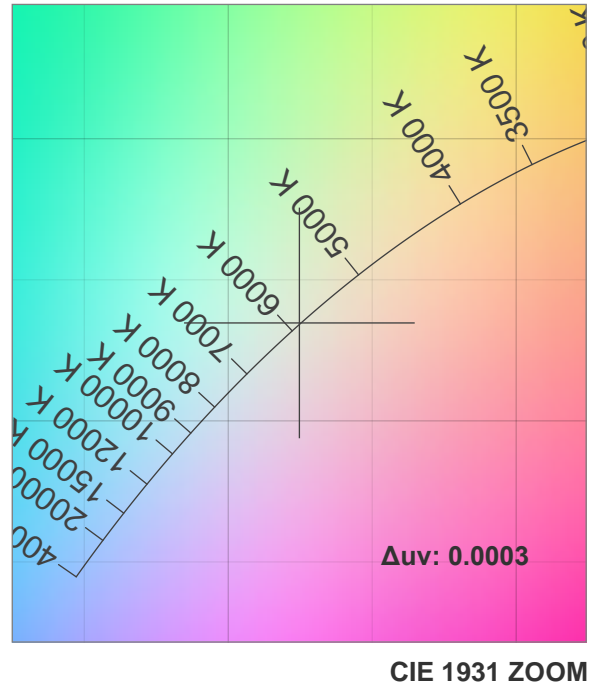
AC Supply: 230V/50Hz

Spectral distribution

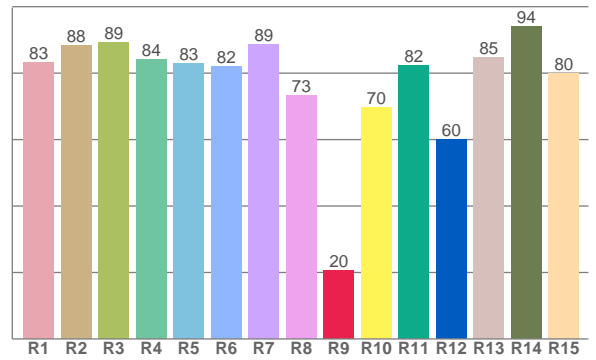
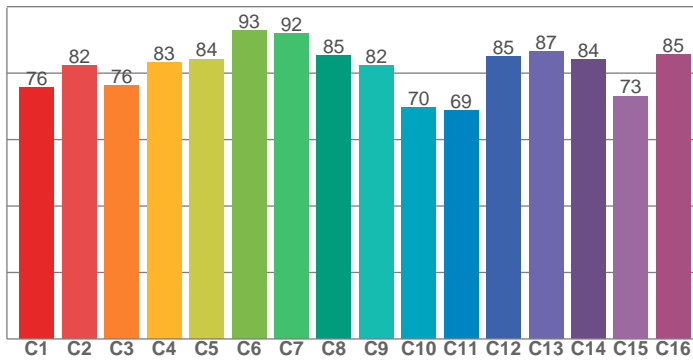




TM30: 81.3



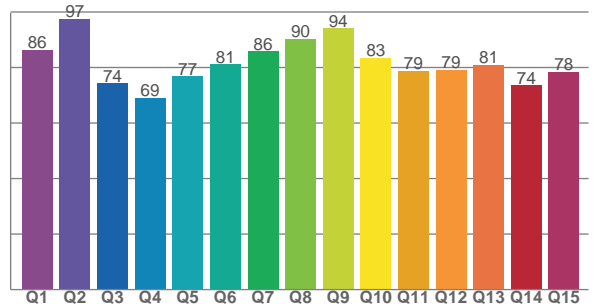
CRI: 84.0 (R1-R8)



Color Parameters

Color Temperature	Color Rendering Index	Red Component	Color Fidelity	Color Gamut
CCT	CRI	CRI R9	TM30 Rf	TM30 Rg
5869 K	84.0	20.5	81.3	96.2

CQS: 80.4



Television Lighting Consistency Index	Color Quality Scale	Color Coordinate CIE 1931	Color Coordinate CIE 1931	Color Coordinate CIE 1964	Color Coordinate CIE 1964	Color Diviation from Black Body
TLCI	CQS	x	y	u	v	Δuv
70+	80.4	0.325	0.335	0.204	0.315	0.0003

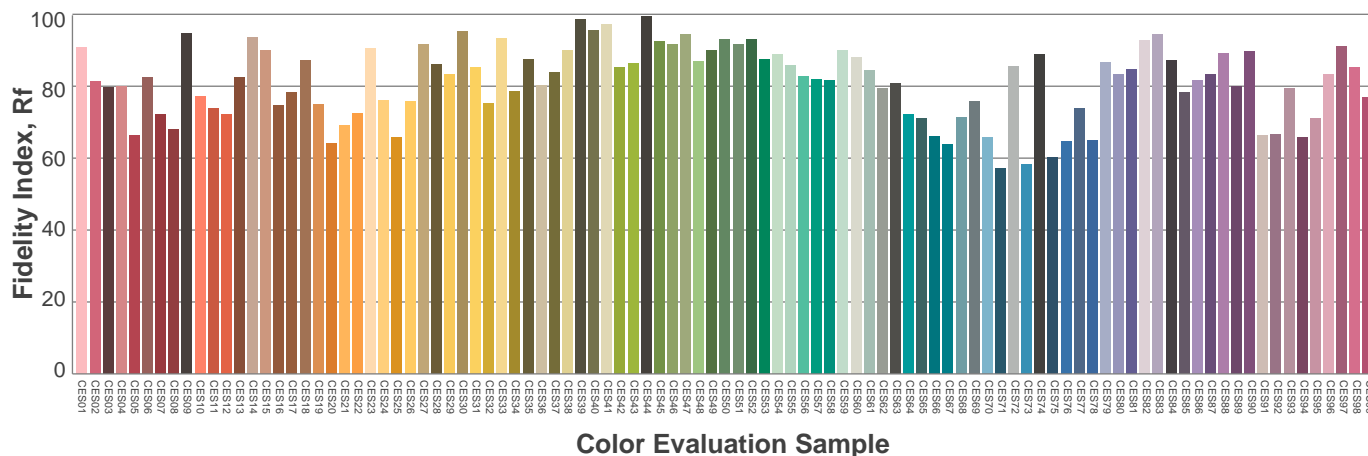
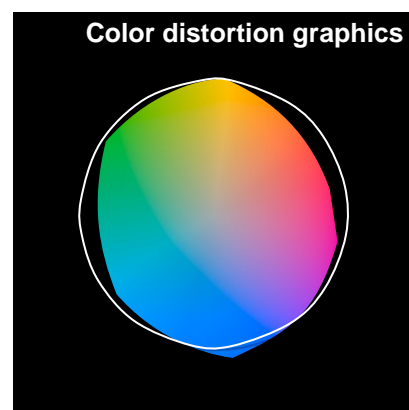
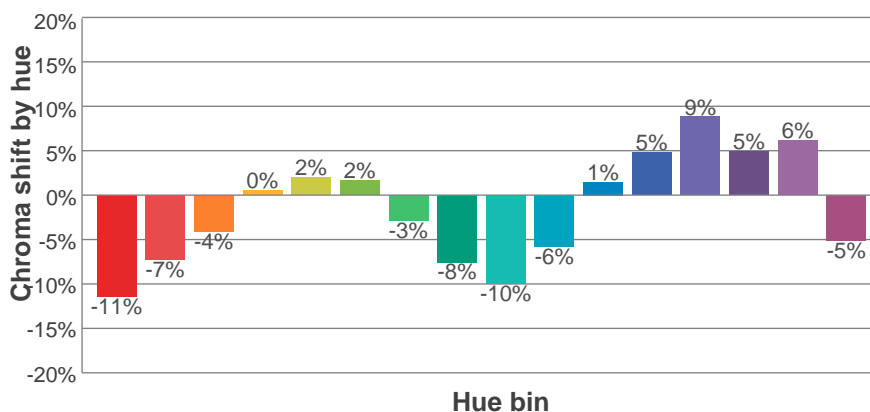
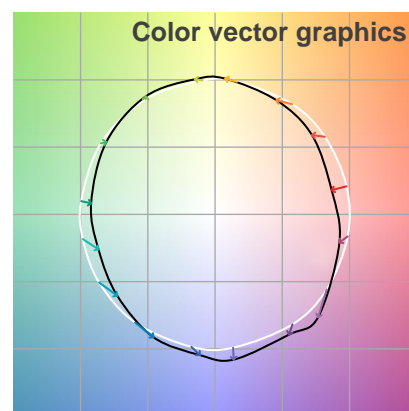
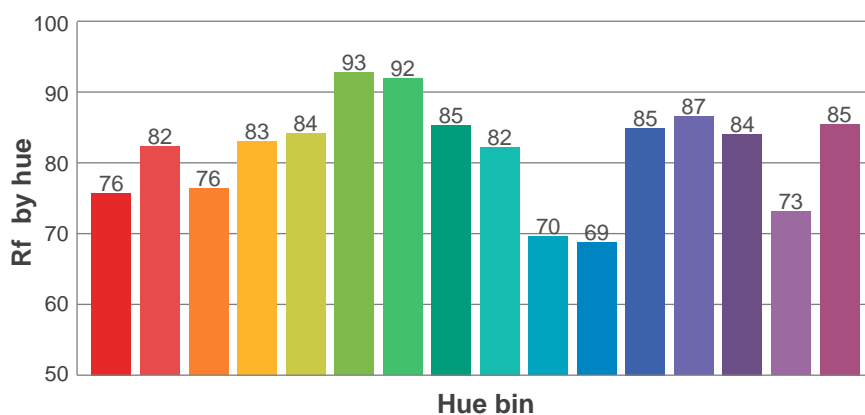
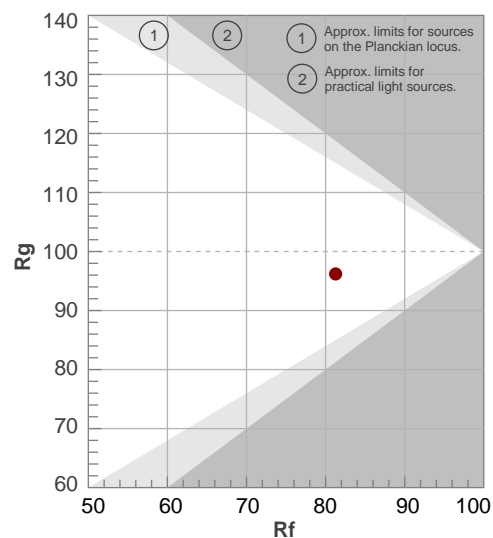
Rf 81.3

Fidelity index Rf

Rg 96.2

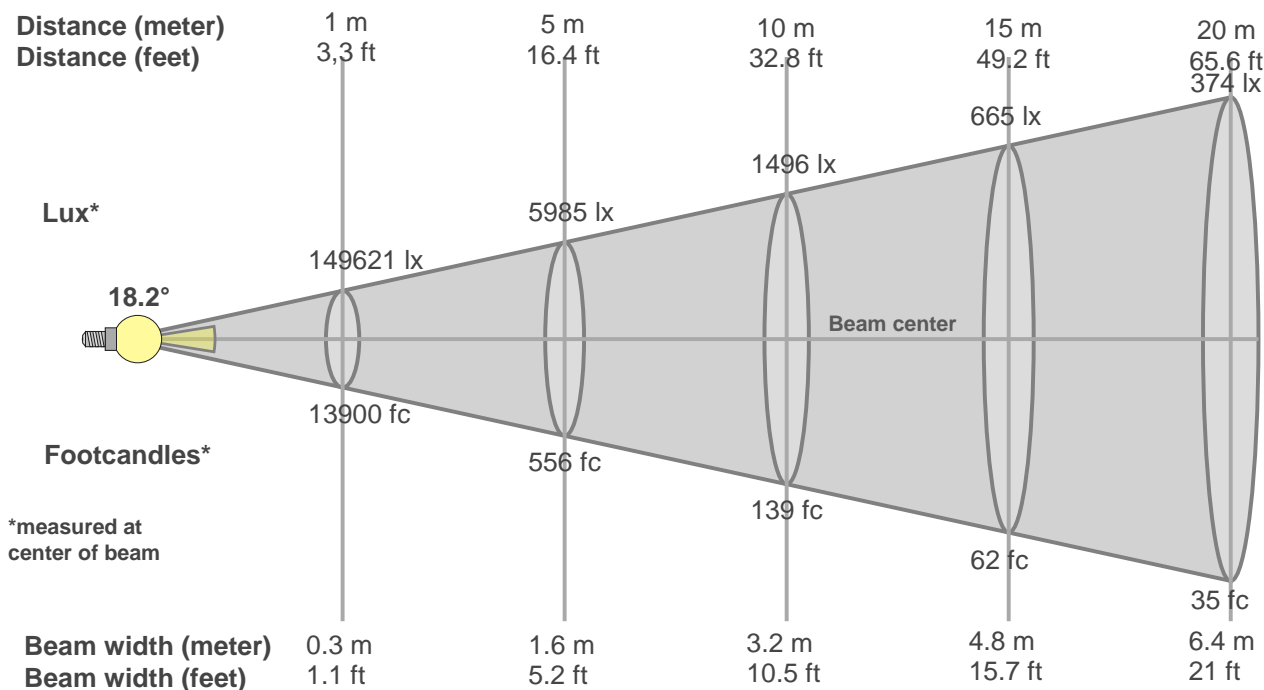
Gamut index Rg

Hue Bin	R _f	Graphic shifts (%)	
		Chroma	Hue
1	76	-11%	-1%
2	82	-7%	6%
3	76	-4%	11%
4	83	0%	9%
5	84	2%	5%
6	93	2%	-1%
7	92	-3%	-3%
8	85	-8%	0%
9	82	-10%	10%
10	70	-6%	16%
11	69	1%	17%
12	85	5%	7%
13	87	9%	-1%
14	84	5%	-6%
15	73	6%	-21%
16	85	-5%	-6%



Beam Details

MAC Encore Performance CLD – Medium



Beam width:

Beam luminous intensity formula:

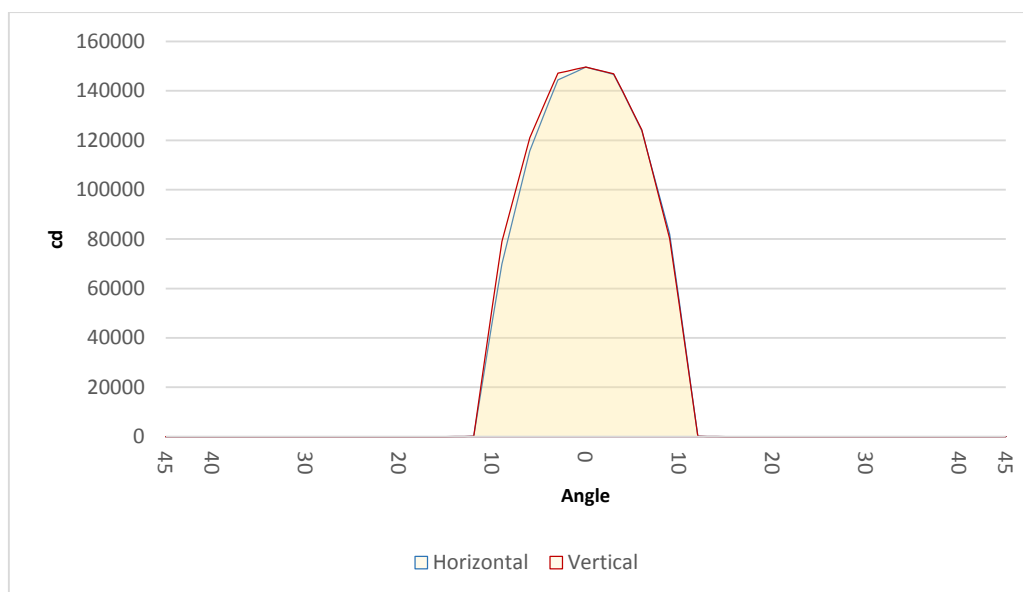
$$w = 0.3 * \text{distance}$$

$$\text{lux} = 149621 / (\text{distance}^2) \text{ (where distance is in meters)}$$

$$\text{fc} = 149621 / (\text{distance}^2) \text{ (where distance is in feet)}$$

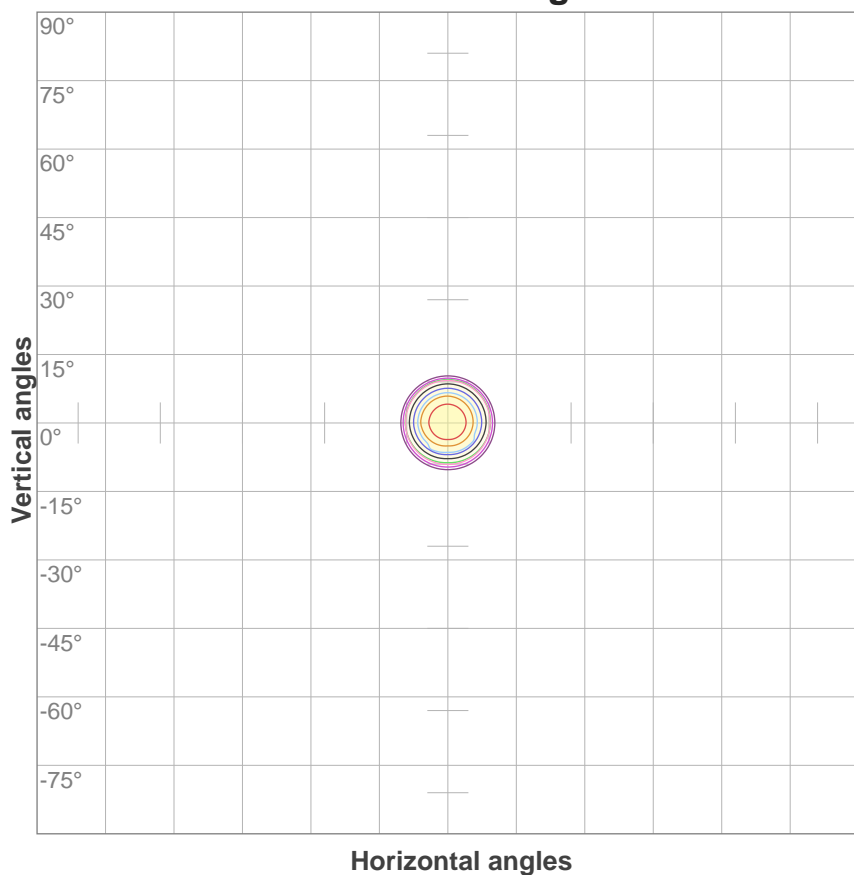
Beam illuminance from 1-20m

1m	2m	3m	4m	5m	6m	7m	8m	9m	10m	11m	12m	13m	14m	15m	16m	17m	18m	19m	20m
3.3ft	6.6ft	9.8ft	13.1ft	16.4ft	19.7ft	23ft	26.2ft	29.5ft	32.8ft	36.1ft	39.4ft	42.7ft	45.9ft	49.2ft	52.5ft	55.8ft	59.1ft	62.3ft	65.6ft
149621lx	37405lx	16625lx	9351lx	5985lx	4156lx	3053lx	2338lx	1847lx	1496lx	1237lx	1039lx	885lx	763lx	665lx	584lx	518lx	462lx	414lx	374lx
13900.3fc	3475.1fc	1544.5fc	868.8fc	556fc	386.1fc	283.7fc	217.2fc	171.6fc	139fc	114.9fc	96.5fc	82.3fc	70.9fc	61.8fc	54.3fc	48.1fc	42.9fc	38.5fc	34.8fc



Beam angle 50%	Field angle 10%	Cutoff angle 3%
18.2°	22.9°	23.7°

ISO candela diagram



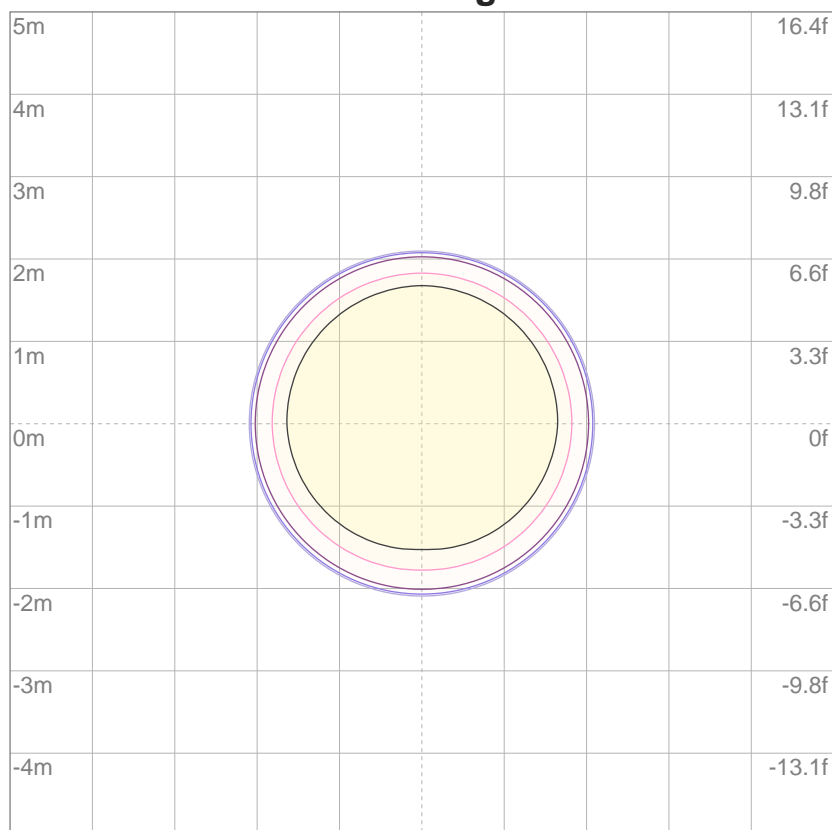
10%	14962 cd
20%	29924 cd
30%	44886 cd
40%	59849 cd
50%	74811 cd
60%	89773 cd
70%	104735 cd
80%	119697 cd
90%	134659 cd

Conditions:

Number of c-planes: 4

Candela at center: 149621 cd

ISO lux diagram



Throw Distance: 10 meters (33 feet)

3%	44.9 lx
5%	74.8 lx
10%	150 lx
30%	449 lx
50%	748 lx

Conditions:

Number of c-planes: 4

Lux at center: 1496 lx

Lux distribution on a surface when lamp is mounted at 10 meters from the surface.